

# Navigating the General Surgery Application process



2024-25 Season  
Devneet Singh,  
Annika Reczek,  
Nate Oommen



01 Resources and  
Statistics

---

02 Choosing  
Programs

---

03 The ERAS  
Application

---

04 interviews

# Table of Contents

# General Timeline

- ★ February: VSLO
- ★ March–May: **Step 2**, gather info for ERAS activities, meet with mentors, think about letter writers
- ★ May – December: rotations and aways, prepare ERAS application
- ★ **End of September: ERAS App due**
- ★ **End of October: Interview Drop Week**
- ★ November – December: Peak Interview Season (some in Jan if you schedule then)
- ★ February: Second Looks
- ★ **First Week of March: Rank List Due**
- ★ Third Week of March: Match

# Choosing Programs

- ★ US MD
- ★ Program Length: 5 – 7 years, mandatory research years? Not allowed to do research? Optional research years?
- ★ Program Type: Academic, Community, Hybrid
- ★ Location/Family
- ★ Average Step score
- ★ Fellowship matches
- ★ Level 1 trauma center
- ★ Career-specific considerations, such as breast fellowship, number and type of transplants, NIH funding
- ★ When deciding how many programs to apply to, you can use the Gen Surg excel spreadsheet “applicant info tab” to see last year’s data and get a ballpark

*Pro Tip: follow programs you’re interested on Instagram to get a vibe of culture and hear about open houses and other interesting info you can bring up in interviews.*

## 2024 General Surgery Residency Application Spreadsheet

ROL Submit Countdown

34

Match Week Countdown

46

Match Day Countdown

50

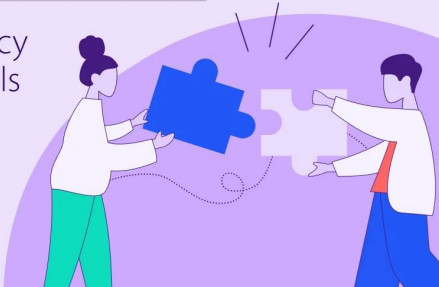


Find your fit  
with FREIDA™

Explore residency  
programs & tools



AMA | FREIDA™



doximity

THE MATCH  
NATIONAL RESIDENT MATCHING PROGRAM®

- AMC Gen Surg Match Excel Sheet (to be sent by Dr Wiczulis)
- Residency Explorer
- Texas STAR: SELF REPORTED data, and tends to skew higher on stats than the average person
- Discord: Can be entertaining and also overwhelming - watch for trolls

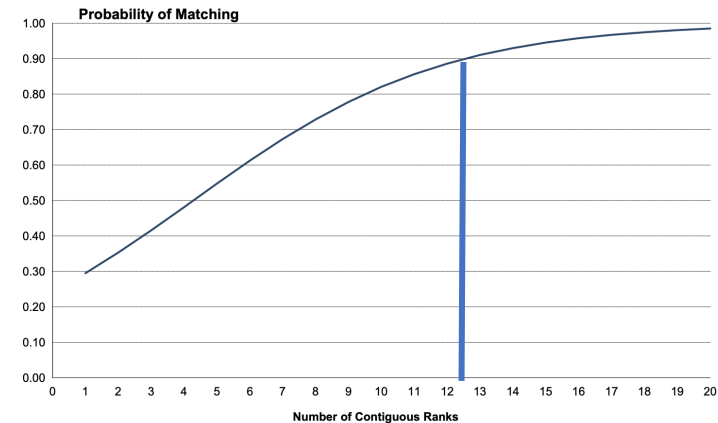
# NRMP Charting Outcomes of the Match

<https://www.nrmp.org/match-data/2024/08/charting-outcomes-characteristics-of-u-s-md-seniors-who-matched-to-their-preferred-specialty-2024-main-residency-match/>

**Table GS-1** Summary Statistics on U.S. MD Seniors  
*General Surgery*

Measure	Matched (n=858)	Unmatched (n=181)
1. Mean number of contiguous ranks	14.1	5.6
2. Mean number of distinct specialties ranked	1.0	1.1
3. Mean USMLE Step 1 score*	235	215
4. Mean USMLE Step 2 score	253	238
5. Mean number of research experiences	4.2	3.7
6. Mean number of abstracts, presentations, and publications	10.9	7.3
7. Mean number of work experiences	2.0	2.5
8. Mean number of volunteer experiences	4.5	4.2
9. Percentage who are AOA members	22.0	2.8
10. Percentage who graduated from one of the 40 U.S. medical schools with the highest NIH funding	27.7	16.6
11. Percentage who have Ph.D. degree	1.8	1.2
12. Percentage who have another graduate degree	21.7	23.8

**Graph GS-1** Probability of U.S. MD Seniors Matching to Preferred Specialty by Number of Contiguous Ranks  
*General Surgery*





# 2024-2025 Gen Surg Application Spreadsheet

<https://docs.google.com/spreadsheets/d/1nD9SDVGHxjtRqAnWPBNiKoyO5jARMZl7jKnbox-MckA/edit?gid=808967751#gid=808967751>

## 2024 General Surgery Residency Application Spreadsheet

ROL Submit Countdown	34	Match Week Countdown	46	Match Day Countdown	50
----------------------	----	----------------------	----	---------------------	----

Nickname	Degree	Grad Year	Med School Region	USMLE STEP 1 attempts	USMLE STEP 2	COMLEX Level 1 Score	COMLEX Level 2 Score	Class Quartile (1 is best)	AOA?	GHHS?	M3 Surgery Honors	# Honored M3 Rotations	# Publications (ERAS)	# Experiences (ERAS)	Couples Match?	# Applications	# Interview Invites	YIELD %	II by Signal x/15
MEAN or MEDIAN	MB...			1	252		588		Y		N		6	10	N	78	10.77	13.80%	
STD DEV or IQR/2	MD			1	13		73						5.5	1		32	7.43	23.58%	
Wild Turkey	MD	2025	South Atlantic	2	274	N/A	N/A	1	Y	Y	Y	8	7	10	N	49	24	48.98%	13/15
M	MD	2025	Non US -IMG	1	258	N/A	N/A	1		N	Y	5	1	10	N	273	1	0.37%	/15
mdmxda	MD	2025	Midwest	1	260	N/A	N/A	1	N	N	Y	4	4	10	Y	104	19	18.27%	
DLH	MD	2025	JS MD - Midwest	1	256	N/A	N/A	1	N	N	Y	6	5	8	N	42	10	23.81%	7/15
J	MD	2025	USMD - South	1	258	N/A	N/A			N	Y	2	3	6	N			#DIV/0!	
Dan	MD	2025	MD - S		243	N/A	N/A	2	N	N	Y	2	16	10	N	80		0.00%	
X	MD	2025	US - West	1	272	N/A	N/A		N	N	Y	6	5	10	N	42	18	42.86%	10/15
T	MD	2023	Non US -IMG	1	254	N/A	N/A	3			Y	8	1	10	N	N		#VALUE!	
GG	MD	2024	USMD - South	1	247	N/A	N/A	3	N	N	Y	2	3	10	N			#DIV/0!	
yoyo	MD	2025	USMD - South	1	260	N/A	N/A	1	Y	Y	Y	5	12	9	Y	30	15	50.00%	11/15
mwMD	MD	2025	US-IMG	1	253	N/A	N/A	2	N	N	Y	4	7	8	N	138	12	8.70%	6/15
donut	MD	2025	Midwest	1	267	N/A	N/A	1	Y	Y	Y	6	3	10	N	55	26	47.27%	13/15
Behemoth	MD	2025	USMD - Midwest	1	248	N/A	N/A	1	N	N	Y	6	7	8	N	88	14	15.91%	5/15
Dives	MD	2024	US-IMG	1	247	N/A	N/A	3	N	N	Y	7	7	10	N	283		0.00%	
Jelly	MD	2024	Midwest	1	257	N/A	N/A	1	Y	Y	Y	6	4	10	N	65	25	38.46%	9/15



## Summary by Program

View competitiveness by program based on applicant responses

By first selecting a specialty, you are able to view each residency program within that specialty's averages and mean characteristics for the applicant pool (default), interviewed pool and matched pool by selecting the Status. This allows

### Specialty

Surgery

### Program Institution

All

### # Students # Appl.

1,488 82,523

### Survey Year

- ☐ 2021  
☐ 2022  
☐ 2023  
☐ 2024

### Step 2 CK

- ☐ Select all  
☐ (Blank)  
☐ 205-209  
☐ 210-214  
☐ 215-219  
☐ 220-224  
☐ 225-229

### Complex 2 CE Range

- ☐ Select all  
☐ (Blank)  
☐ 400-449  
☐ 450-499  
☐ 500-549  
☐ 550-599  
☐ 600-649

### Appl. Status

- ☐ Interview Offer  
☐ Matched  
☐ No Interview Offer

### Graduate Degree

- ☐ DO  
☐ MD

### AOA/Sigma

- ☐ No  
☐ No Chapter  
☐ Yes

### Gold Humanism

- ☐ No  
☐ No Chapter  
☐ Yes

### Cumulative Quartile

- ☐ 1st  
☐ 2nd  
☐ 3rd  
☐ 4th  
☐ N/A

Program Institution	Step 2 Avg	Step 2 Median	Complex 2 Avg.	Complex 2 Median	Step 1 Median	Complex 1 Median	Total # Applicants	Total # Signed Program	Interview Offer #	Interview Offer Pct	Matched #	AC Pct
Baylor College of Medicine (Houston)	254	257	617	650	237	525	493	30	131	27%	5	
Brown University	254	257	621	625	242	575	641	77	81	13%	7	
McGaw Medical Center of Northwestern University	254	257	617	625	235		134	21	33	25%	4	
Oregon Health & Science University (OHSU Health)	254	252			247		3		1	33%		
Easton Hospital	254	252	605	625	237	475	80	2	10	13%		
Icahn School of Medicine at Mount Sinai/Mount Sinai Hospital	254	257	625	625	242	675	712	7	92	13%	6	
University of Chicago	254	257	649	675	242	575	568	28	112	20%	11	
Ohio State University Hospital	254	257	675	675	242	625	743	61	145	20%	20	
Emory University School of Medicine	254	257	658	650	237	575	352	2	82	23%	9	
Icahn School of Medicine at Mount Sinai	253	257	638	625	237	675	394	19	111	28%	5	
University of Cincinnati Medical Center/College of Medicine	253	257	645	625	237	625	695	57	122	18%	9	
University of North Carolina Hospitals	253	252	628	600	242	625	592	76	92	16%	9	
University of Washington	253	252	665	725	237	725	512	49	92	18%	7	
University of California (San Diego) Medical Center	253	257	602	625			51	10	24	47%	5	
Corewell Health Grand Rapids/Michigan State University	253	255	650	625	237	575	635	51	147	23%	12	
Sidney Kimmel Medical College at Thomas Jefferson University/TJUH	253	257	622	625	237	575	458	17	112	24%	5	
University of Wisconsin Hospitals and Clinics	253	252	636	625	237	625	622	70	173	28%	19	
University of Texas Southwestern Medical Center	253	252	661	675	237	625	179		25	14%	3	
Mayo Clinic College of Medicine and Science (Phoenix)	253	252	600	625	237	575	618	75	120	19%	8	
Boston University Medical Center	253	252	654	675	237	625	662	63	135	20%	8	
Baylor College of Medicine	253	252	644	625	237	625	439	21	192	44%	6	
University of Miami/Jackson Health System	253	252			242		59		23	39%	2	
Stony Brook Medicine/University Hospital	253	252	675	700	237	625	629	45	97	15%	3	
University of Virginia Medical Center	253	252	664	700	242	650	460	45	125	27%	14	
Oregon Health & Science University	253	252	617	575	237	675	562	21	140	25%	13	
University of Colorado	253	252	625	625	237	650	569	29	77	14%	10	
University of Maryland	253	252	633	625	237	650	317	36	49	15%	5	
Wake Forest University Baptist Medical Center	253	252	650	650	242	700	330	29	79	24%	9	
University of Southern California/LAC+USC Medical Center	253	252	625	625	237	575	81		39	48%	3	
Icahn School of Medicine at Mount Sinai (West Side)	253	252	632	625	237	625	410	30	122	30%	8	
Cedars-Sinai Medical Center	253	252	654	675	237	575	677	70	211	31%	5	
MedStar Health/Georgetown-Washington Hospital	252	252	635	625	237	575	547	13	129	24%	1	
Case Western Reserve University/University Hospitals Cleveland Medical Center	252	252	652	675	237	625	477	39	145	30%	9	
University of Alabama Medical Center	252	252	617	575	237	575	464	41	115	25%	5	
University of California Davis Health	252	252	667	675	237	625	182	1	43	24%	2	
Mayo Clinic College of Medicine and Science (Arizona)	252	252	595	575	237	575	407	42	127	31%	9	
Los Angeles County Harbor-UCLA Medical Center	252	252	628	625	237	575	82,523	4,178	21,724	26%	1263	
<b>Total</b>	<b>250</b>	<b>252</b>	<b>628</b>	<b>625</b>	<b>237</b>	<b>575</b>						

In this tab, select a specialty. Select applicant criteria. The database pulls the programs to which students with the selected criteria applied and demonstrates their application information and Match outcomes. For example, choose applicants applying to Child Neurology with a Step 2 CK score of 245-249. At Baylor College of Medicine, 92% of applicants with these criteria received an interview. You may also use this tab to select specific program institutions to assess applicant information and Match outcomes.




	<b>Applicant 1</b>	<b>Applicant 2</b>	<b>Applicant 3</b>
<b>Step 1</b>	Pass	Pass	Pass
<b>Step 2</b>	25X	24X	24X
<b>Class Quartile</b>	1	3	2
<b>AOA/Gold Humanism</b>	Yes/Yes	No/No	No/No
<b>MS3 Surgery Grade</b>	EH	G	E
<b>Publications</b> (Peer Reviewed Journals/Other than Published/Posters/Oral Pres/Peer Reviewed Online)	11 (0/2/6/1/2)	20 (6/1/11/2/0)	17 (2/3/5/5/2)
<b>ERAS Experiences</b>	10	10	10
<b>Program Applications</b>	60	90	100+
<b>Interviews</b>	10+	10+	20+

# The ERAS Application

- Activities
- Personal statement
- Letters of rec - 4
- Demographics/hometowns
- Geographic preferences with reasoning
- Signals (15?)
- Make separate ERAS gmail account to make accepting interviews easier, set up email to text message forwarding with special vibration/ringtone
  - Most of interview sign up occur on a separate website called “Thalamus”
  - Can use AMC email too

# Letter Writers



- Chair Letter plus 2-3 general surgery trained surgeons
  - Chair letter comes from a meeting from Dr. King which she will email and set up
  - 1-2 letters from your surgery AI at AMC
  - If you're doing aways, try to have all 4 letters from AMC before leaving, then pick & choose which letters to send where
  - Ex: King, Zaman, Tafen, K. Edwards
  - Ex: King, DiBrito, Nigam, Away Letter
  - Ex: King, Zaman, Nigam, Lee
- 

# Signaling and Strategies



- Interviews to Signals ratio
  - Devneet: 11 to 15
  - Annika: 3 to 15
  - Nate: 4 to 15
- Traditional thought process is 5 target schools, 5 reach schools, and 5 safeties
- Alternatively, you can use most signals toward reach programs
- Ask home and away institutions if they want you to signal them
- FREIDA has information on % of applicants interviewed who signaled vs. did not
- In the 2024-25 cycle, we got most interviews from non-sigaled programs

# Geo Signals

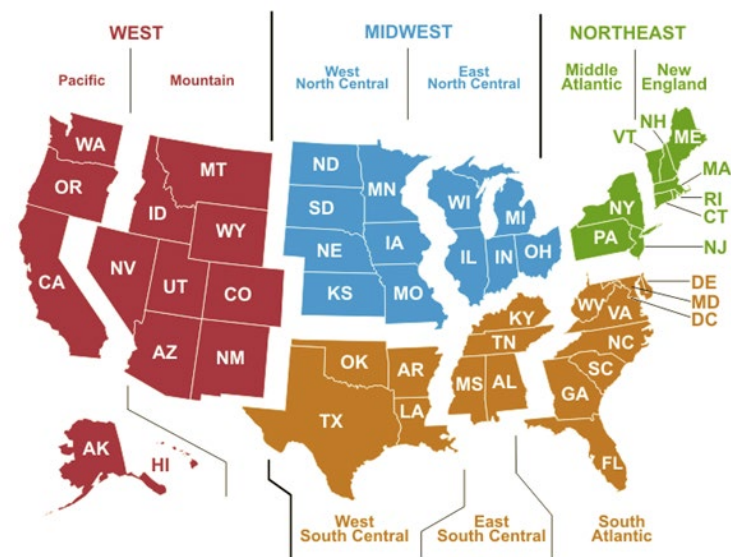
You get to choose 3 locations or “no preference”

IF you choose a region:

- Programs within the region will see that you signaled the region and why
- Programs outside the region will see that you did not signal that region

IF you choose “no preference”:

- All programs will see that you had no preference on your geo region and your explanation



<input type="text" value="Count of Programs"/>	
East North Central	64
East South Central	14
Middle Atlantic	81
Mountain	18
New England	20
Other - Caribbean	2
Pacific	32
South Atlantic	70
West North Central	18
West South Central	32
<b>Grand Total</b>	<b>351</b>



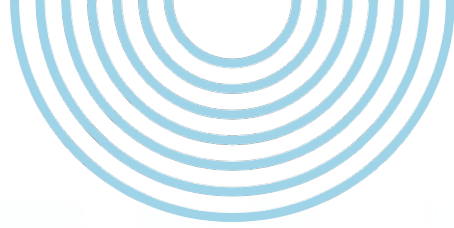
# Interviews

- Open House – can find through Instagram and X
- Preparation
  - Browse website and look at the different hospitals they work at, opportunities to further your career interests, where residents come from
  - Look up your interviewers' specialty, look for any interests they have and try to tailor questions to that
  - Have 3 questions prepared for each interviewer and PD, some could be the same
- Social
- Interview day
  - Somewhere between 3-6 10-20 minute interviews with a mix of faculty, PD/APD, residents
- Post-interview communication
  - Send thank-yous if you would like
  - Letter of intent late January for your #1 program **if you are sure they are your #1, do not send to multiple programs of if you're unsure**
- Second Look

# Questions to ask programs during interview/social

1. Advanced practice provider (PA/NP) support on some/all services?
2. Ability to further your other career interests (healthcare leadership, med ed, advocacy, community service)
3. Presence of fellows and split of work
4. Research Years/Funding/Other support (PhD, statistician)
5. Call schedule
6. Anticipated changes in the next 5 years/vision for the program
7. Ask about your career interests (trauma, transplant, surg onc)
8. Diversity (gender in residents and faculty, race, single/married/pregnant)
9. How many people stay for fellowship or attendingship?

# Common Interview Questions



1. Tell me about yourself x1000
2. Why General Surgery?
3. What are you most proud of?
4. Where do you see yourself 5-10 years from now? (subspecialty, career, practice setting)
5. Tell me about a (surgery) mentor.
6. Tell me about a difficult person to work with (patient/classmate).
7. Tell me about an interesting clinical case.
8. Tell me about an adversity you've faced.

*There are many more real questions on the excel spreadsheet!*

# Some Fun Questions

I see you're Polish and Cuban. Tell me more about that.

Tell me about your dog.

What are you cooking for dinner tonight?

What is a string of turtles?

What surgery could you do right now?

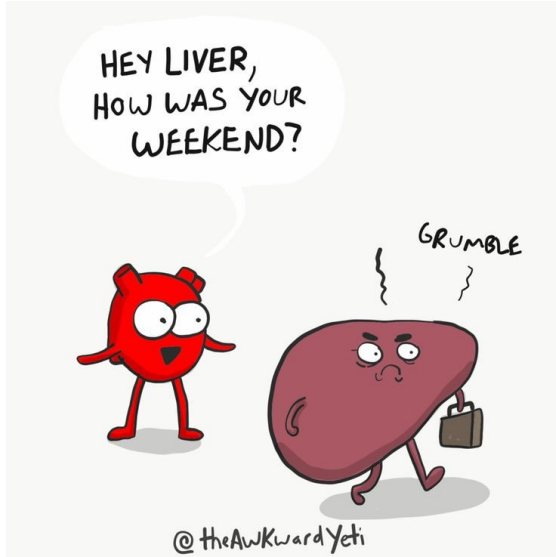
What would your friends say about you?

Take me step by step putting in a chest tube.

Last book you read?

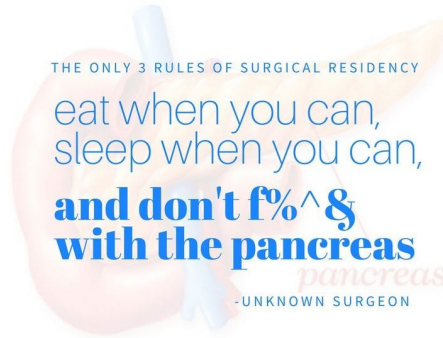


# Good Luck!

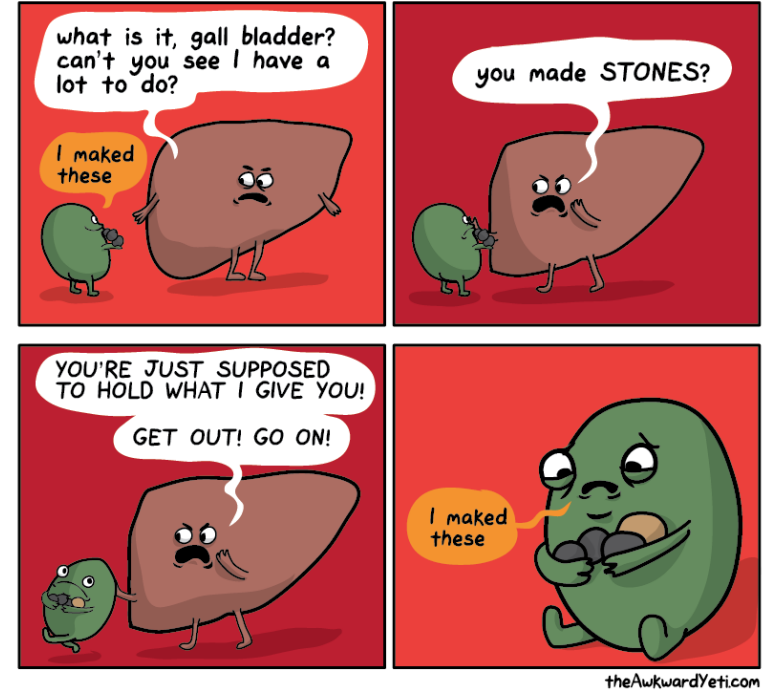


Devneet Singh  
devneetsingh130@gmail.com

WHEN I PROMISE  
TO COME UP  
WITH AN ORGAN  
TRANSPLANT PUN  
  
**I DE-LIVER**



Annika Reczek  
annika.reczek@gmail.com



Nate Oommen